

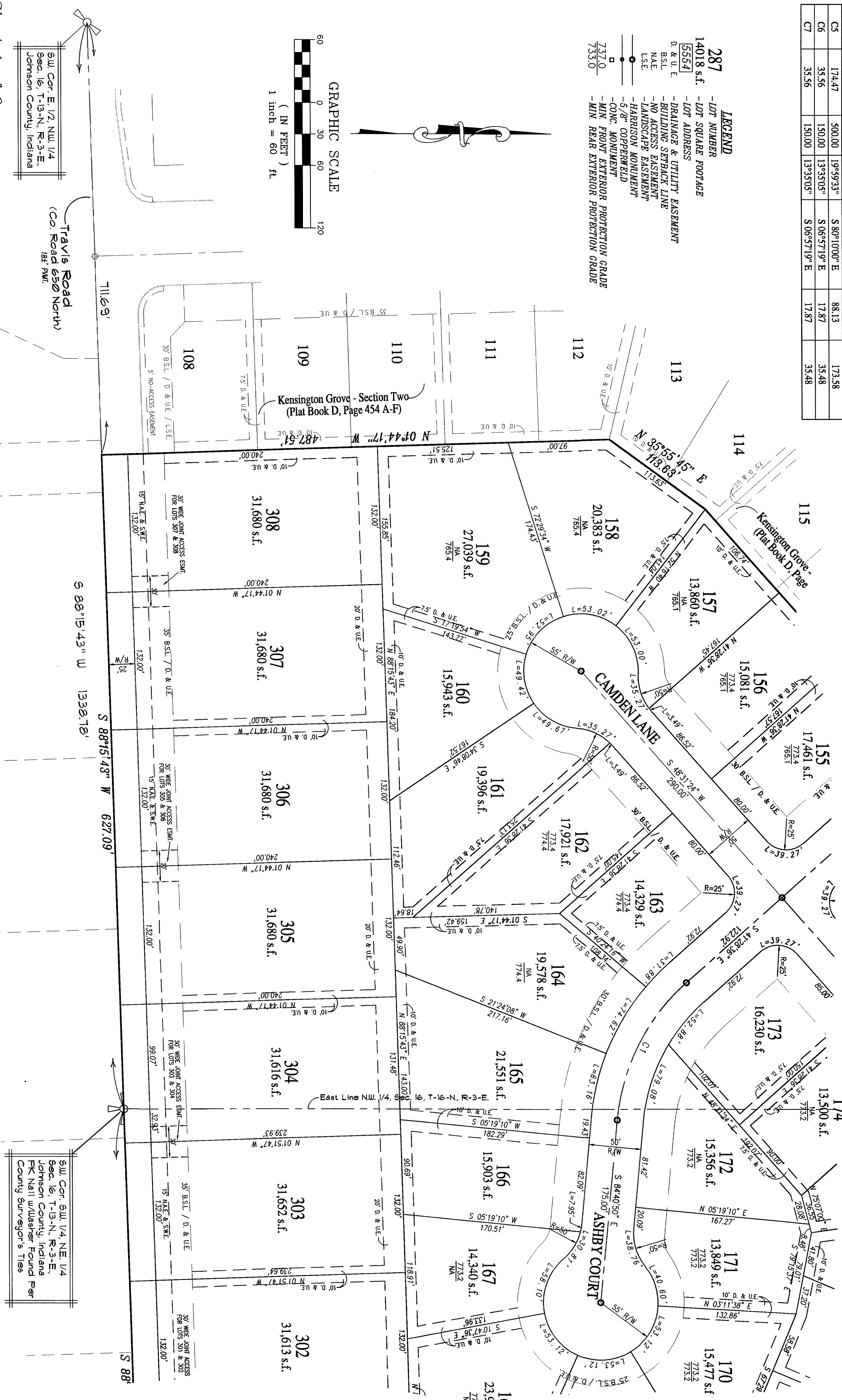
KENSINGTON GROVE - SECTION THREE

WHITE RIVER TOWNSHIP
GREENWOOD, JOHNSON COUNTY, INDIANA

CURVE DATA

NUMBER	ARC LENGTH	RADIUS	DELTA	CHORD DIRECTION	TANGENT	CHORD LENGTH
CI	150.81	200.00	43°12'14"	S 63°04'43" E	79.19	147.26
C2	167.50	200.00	47°59'06"	N 72°30'57" E	28.10	162.65
C3	55.83	200.00	15°59'42"	S 75°29'39" E	28.10	55.65
C4	23.33	500.00	02°40'26"	S 88°30'01" E	11.67	23.33
C5	174.47	500.00	19°59'33"	S 80°10'00" E	88.13	173.58
C6	35.56	150.00	13°35'05"	S 06°57'19" E	17.87	35.48
CT	35.56	150.00	13°35'05"	S 06°57'19" E	17.87	35.48

- LEGEND**
- 287 - LOT NUMBER
 - 14018 s.f. - LOT SQUARE FOOTAGE
 - 5554 - LOT ADDRESS
 - D & U.E. - DRAINAGE & UTILITY EASEMENT
 - B.S.L. - BUILDING SETBACK LINE
 - N.A.E. - NO ACCESS EASEMENT
 - L.S.E. - LANDSCAPE EASEMENT
 - - HARBISON MONUMENT
 - - CONC. MONUMENT
 - - MIN. FRONT EXTERIOR PROTECTION GRADE
 - - MIN. REAR EXTERIOR PROTECTION GRADE



MAURER & SMITHERS, INC.
3425 West County Line Road, Greenwood, Indiana 46142
Office - 317-881-3898 Fax - 317-881-4099
LAND SURVEYING, LAND DEVELOPMENT & BUILDERS SERVICES

Sheet 1 of 6

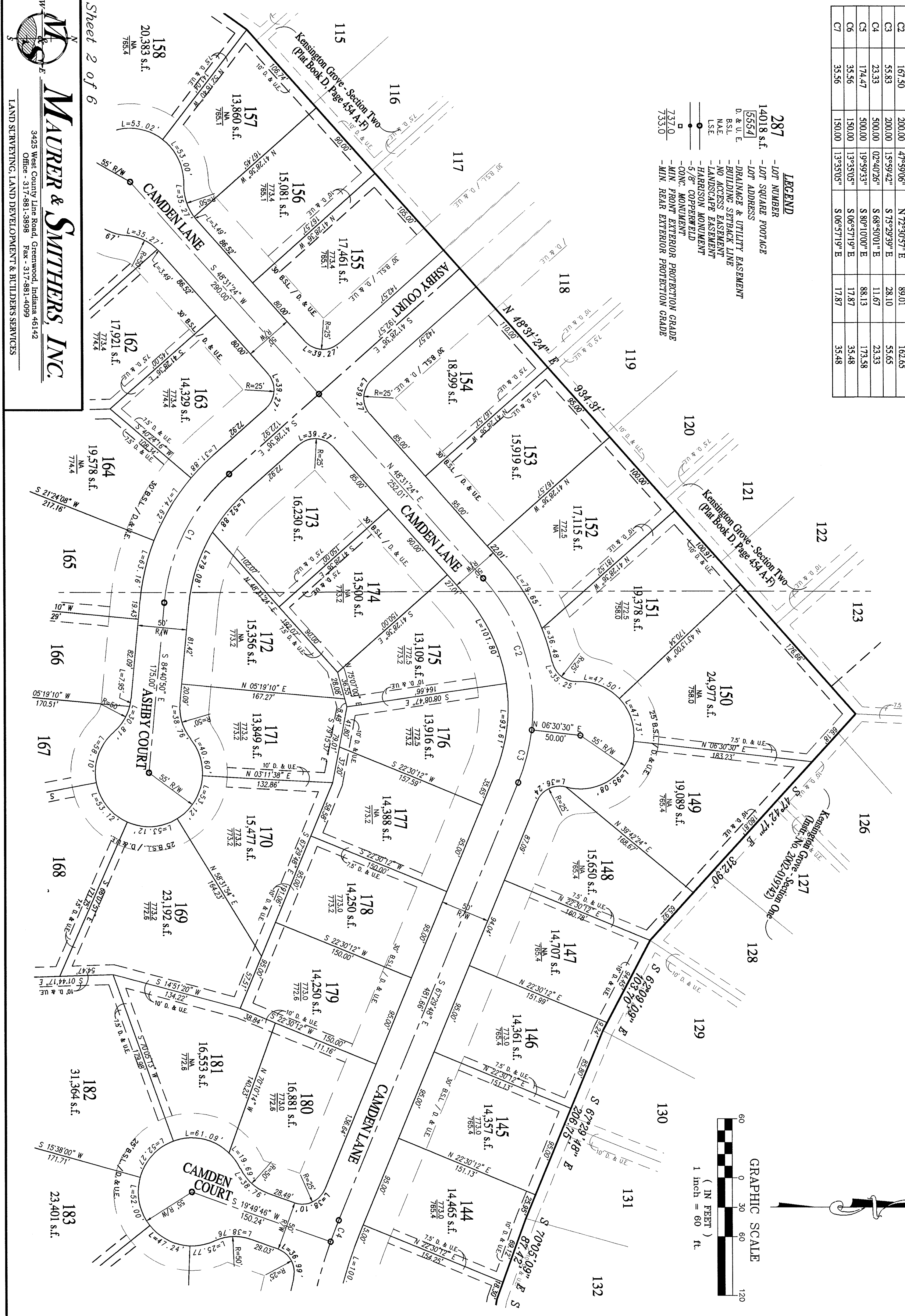
KENSINGTON GROVE - SECTION THREE

WHITE RIVER TOWNSHIP
GREENWOOD, JOHNSON COUNTY, INDIANA

CURVE DATA

NUMBER	ARC LENGTH	RADIUS	DELTA	CHORD DIRECTION	TANGENT	CHORD LENGTH
CI	150.81	200.00	43°12'14"	S 63°04'43" E	79.19	147.26
C2	167.50	200.00	47°59'06"	N 72°30'57" E	28.10	162.65
C3	55.83	200.00	15°59'42"	S 75°29'39" E	28.10	55.65
C4	23.33	500.00	02°40'26"	S 88°30'01" E	11.67	23.33
C5	174.47	500.00	19°59'33"	S 80°10'00" E	88.13	173.58
C6	35.56	150.00	13°35'05"	S 06°57'19" E	17.87	35.48
CT	35.56	150.00	13°35'05"	S 06°57'19" E	17.87	35.48

- LEGEND**
- 287 - LOT NUMBER
 - 14018 s.f. - LOT SQUARE FOOTAGE
 - 5554 - LOT ADDRESS
 - D & U.E. - DRAINAGE & UTILITY EASEMENT
 - B.S.L. - BUILDING SETBACK LINE
 - N.A.E. - NO ACCESS EASEMENT
 - L.S.E. - LANDSCAPE EASEMENT
 - - HARBISON MONUMENT
 - - CONC. MONUMENT
 - - MIN. FRONT EXTERIOR PROTECTION GRADE
 - - MIN. REAR EXTERIOR PROTECTION GRADE

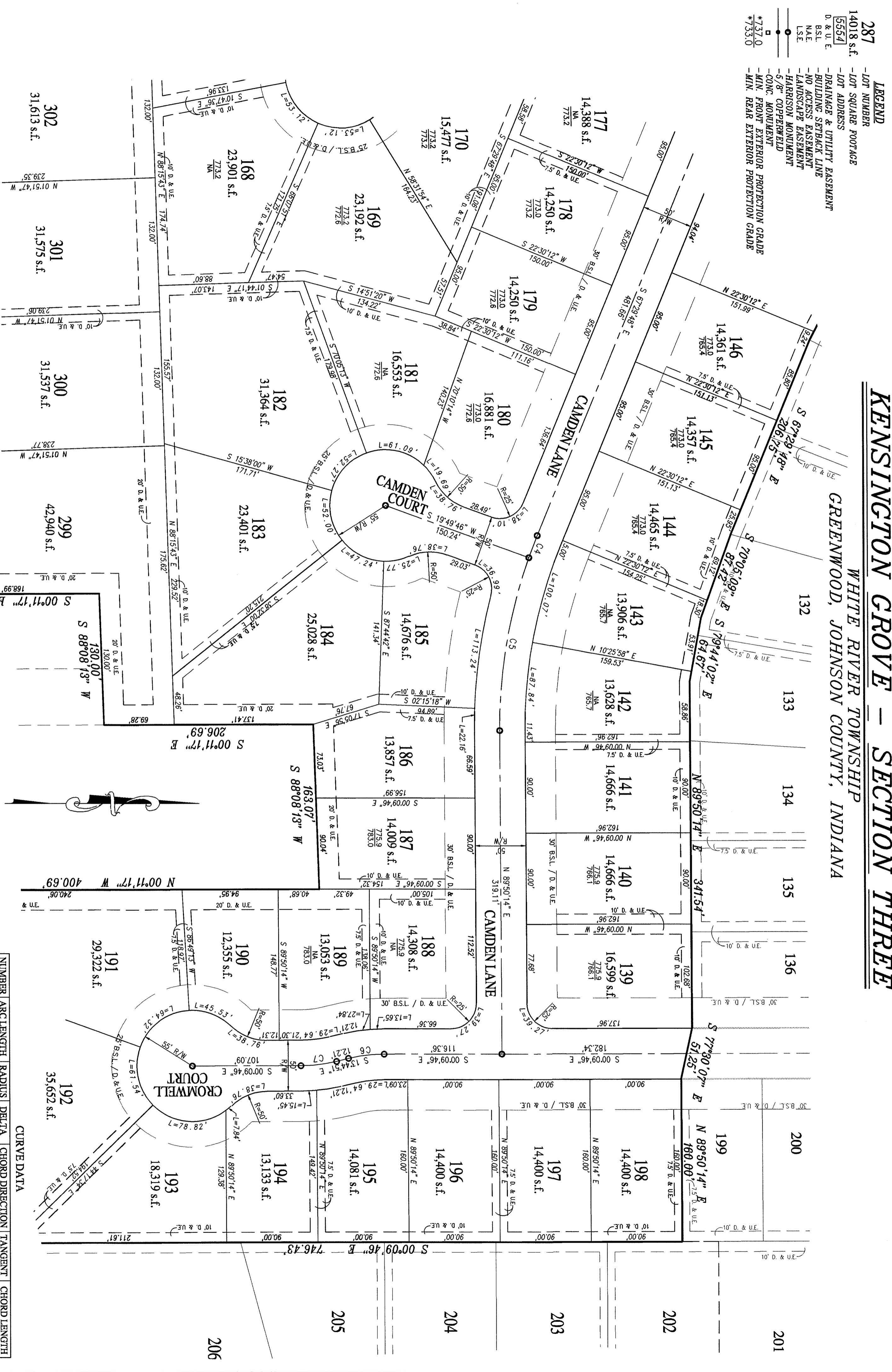


MAURER & SMITHERS, INC.
3425 West County Line Road, Greenwood, Indiana 46142
Office - 317-881-3898 Fax - 317-881-4099
LAND SURVEYING, LAND DEVELOPMENT & BUILDERS SERVICES

Sheet 2 of 6

KENSINGTON GROVE - SECTION THREE

WHITE RIVER TOWNSHIP
GREENWOOD, JOHNSON COUNTY, INDIANA



287
-LOT NUMBER
-LOT SQUARE FOOTAGE
14018 s.f.
5554
D & U.E.
B.S.L.
N.A.E.
L.S.E.
7373.0
7333.0

LEGEND
-LOT ADDRESS
-DRAINAGE & UTILITY EASEMENT
-BUILDING SETBACK LINE
-LANDSCAPE EASEMENT
-HARRISON MONUMENT
-5/8" COPPERWELD
-CONC. MONUMENT
-MIN. FRONT EXTERIOR PROTECTION GRADE
-MIN. REAR EXTERIOR PROTECTION GRADE

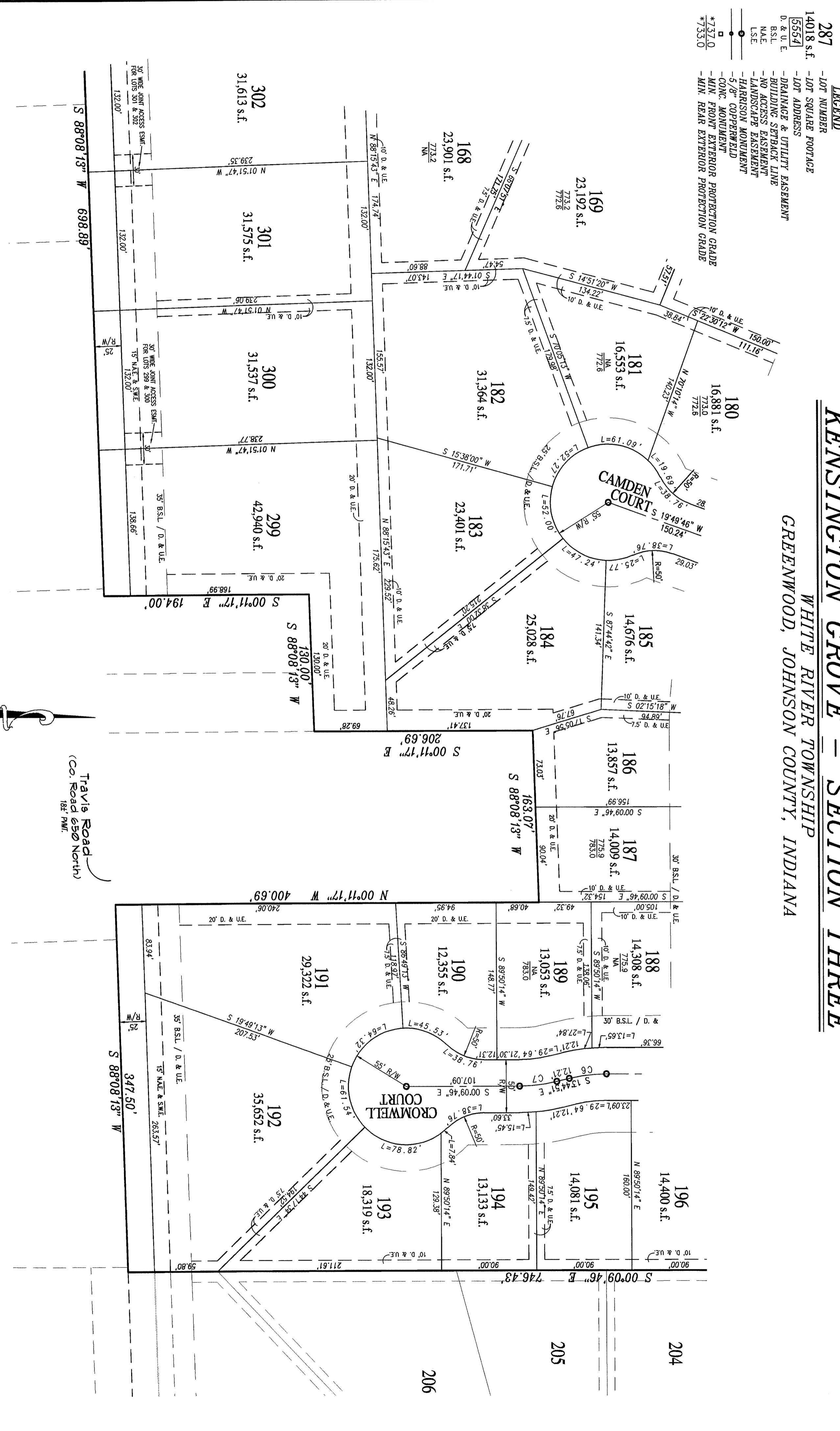
MURRER & SMITHERS, INC.
3425 West County Line Road, Greenwood, Indiana 46142
Office - 317-881-3898 Fax - 317-881-4099
LAND SURVEYING, LAND DEVELOPMENT & BUILDERS SERVICES

CURVE DATA

NUMBER	ARC LENGTH	RADIUS	DELTA	CHORD DIRECTION	TANGENT	CHORD LENGTH
C1	150.81	200.00	43°12'14"	S 63°04'43" E	79.19	147.26
C2	167.50	200.00	47°59'06"	N 72°30'57" E	89.01	162.65
C3	53.83	200.00	15°59'42"	S 73°29'39" E	28.10	55.65
C4	23.33	500.00	02°40'26"	S 88°50'01" E	11.67	23.33
C5	174.47	500.00	02°40'26"	S 88°50'01" E	88.13	173.58
C6	35.56	150.00	13°35'05"	S 06°57'19" E	17.87	35.48
C7	35.56	150.00	13°35'05"	S 06°57'19" E	17.87	35.48

KENSINGTON GROVE - SECTION THREE

WHITE RIVER TOWNSHIP
GREENWOOD, JOHNSON COUNTY, INDIANA



287
-LOT NUMBER
-LOT SQUARE FOOTAGE
14018 s.f.
5554
D & U.E.
B.S.L.
N.A.E.
L.S.E.
7373.0
7333.0

LEGEND
-LOT ADDRESS
-DRAINAGE & UTILITY EASEMENT
-BUILDING SETBACK LINE
-LANDSCAPE EASEMENT
-HARRISON MONUMENT
-5/8" COPPERWELD
-CONC. MONUMENT
-MIN. FRONT EXTERIOR PROTECTION GRADE
-MIN. REAR EXTERIOR PROTECTION GRADE

MURRER & SMITHERS, INC.
3425 West County Line Road, Greenwood, Indiana 46142
Office - 317-881-3898 Fax - 317-881-4099
LAND SURVEYING, LAND DEVELOPMENT & BUILDERS SERVICES

CURVE DATA

NUMBER	ARC LENGTH	RADIUS	DELTA	CHORD DIRECTION	TANGENT	CHORD LENGTH
C1	150.81	200.00	43°12'14"	S 63°04'43" E	79.19	147.26
C2	167.50	200.00	47°59'06"	N 72°30'57" E	89.01	162.65
C3	53.83	200.00	15°59'42"	S 73°29'39" E	28.10	55.65
C4	23.33	500.00	02°40'26"	S 88°50'01" E	11.67	23.33
C5	174.47	500.00	02°40'26"	S 88°50'01" E	88.13	173.58
C6	35.56	150.00	13°35'05"	S 06°57'19" E	17.87	35.48
C7	35.56	150.00	13°35'05"	S 06°57'19" E	17.87	35.48

Sheet 4 of 6

